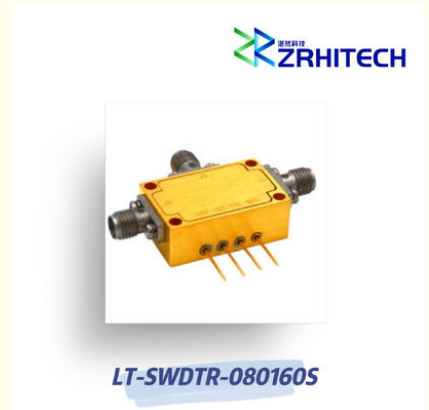


8 To 16 GHz SPDT Reflective PIN Diode Switch

Our Product Introduction

Basic Information

- Place of Origin: CHINA
- Brand Name: ZR Hi-Tech
- Model Number: LT-SWDTR-080160S
- Minimum Order Quantity: 1
- Packaging Details: carton packing
- Delivery Time: 4 weeks
- Payment Terms: T/T



Product Specification

- Product Name: LT-SW Series PIN Diode Switch
- Application: Wireless Communication
- Material: Aluminum
- Temperature: -40~85
- Frequency Range: 8 To 16 GHz
- Color: Silver
- Highlight: 8 GHz PIN Diode Switch,
16 GHz PIN Diode Switch,
Reflective PIN Diode Switch

for more products please visit us on zrhitech.com

Product Description

8 To 16 GHz SPDT Reflective PIN Diode Switch

Product Attributes

Attribute	Value
Product name	LT-SW series PIN Diode Switch
Application	Wireless Communication
Material	Aluminum
Temperature	-40~85
Frequency range	8 to 16 GHz
Color	Silver

Product Description

The **8 to 16 GHz LT-SW Series PIN Diode Switch** offers high-performance switching for demanding wireless communication applications.

Key Features

- Aluminum housing for durability
- Customizable frequency options
- Wide operating temperature range (-40 to +85)
- Fast switching time of 80ns
- Compliance with CE, RoHS, and REACH standards
- 1-year warranty included

The LT-SWDTR-080160S is a reflective PIN diode switch with a frequency range of 8 to 16 GHz, offering 60 dB isolation and 80ns switching speed. It operates with a power supply bias of +5V/90mA and -5V/50mA.

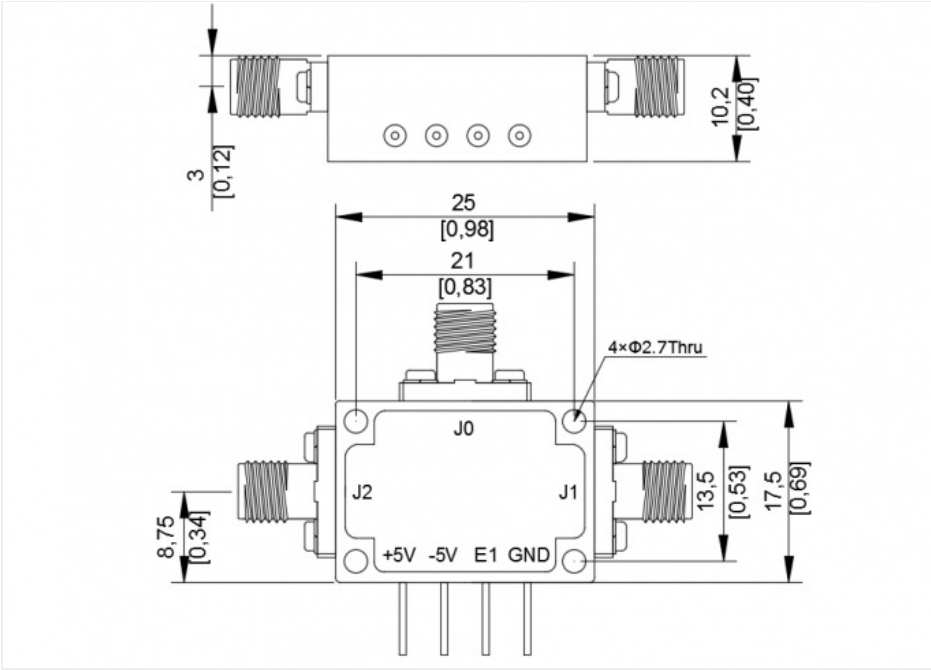
Technical Specifications

Items	Specification	Conditions
Part Number	LT-SWDTR-080160S	
Type	Reflective	
Configuration	SPDT	
Frequency Range	8 to 16 GHz	
Insertion Loss	2.8 dB	
Isolation	60 dB	
Switching Speed	80 ns	
Control	TTL	
Input/Output VSWR	2.0:1	

Input Power	1 W	
Power Supply (Bias)	+5V / 90mA -5V / 50mA	
Dimension	25*17.5*10.2mm	

Note: For custom specifications, please contact us directly.

Outline Drawing



 **ZRH1001** Sichuan ZR Hi-Tech Ltd.

☎ 17342580638 ✉ info@zrhitech.com 🌐 zrhitech.com

Room 507, Advanced Technology Achievement Western Transformation Center, No. 36 Xingke South Road,
Jinniu District, Chengdu, Sichuan, China