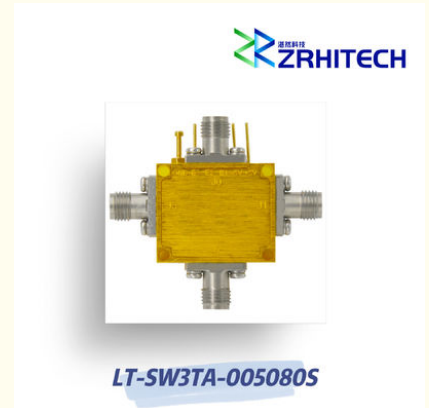


0.5 To 8 GHz SP3T Absorptive PIN Diode Switch

Our Product Introduction

Basic Information

- Place of Origin: CHINA
- Brand Name: ZR Hi-Tech
- Model Number: LT-SW3TA-005080S
- Minimum Order Quantity: 1
- Packaging Details: carton packing
- Delivery Time: 4 weeks
- Payment Terms: T/T



Product Specification

- Product Name: LT-SW Series PIN Diode Switch
- Application: Wireless Communication
- Material: Aluminum
- Temperature: -40~85
- Frequency Range: 0.5 To 8 GHz
- Color: Silver
- Highlight: **high power PIN Diode Switch,
PIN Diode Switch 0.5 GHz,
8 GHz PIN Diode Switch**

for more products please visit us on zrhitech.com

Product Description

0.5 To 8 GHz SP3T Absorptive PIN Diode Switch

Product Overview

The LT-SW series PIN Diode Switch is designed for wireless communication applications, featuring a durable aluminum housing and reliable performance across a wide temperature range.

Key Features

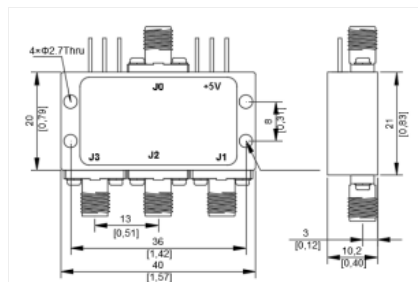
- Frequency range: 0.5 to 8 GHz
- Aluminum housing for durability
- Operating temperature: -40 to +85
- Fast switching time: 100ns
- CE, RoHS, REACH compliant
- 1-year warranty

Detailed Specifications

Parameter	Specification	Conditions
Part Number	LT-SW3TA-005080S	
Type	Absorptive	
Configuration	SP3T	
Frequency Range	0.5 to 8 GHz	
Insertion Loss	2 dB	
Isolation	60 dB	
Switching Speed	100 ns	
Control	TTL	
Input/Output VSWR	1.5:1	
Input Power	1 W	
Power Supply (Bias)	+5V / 150mA -5V / 50mA	
Dimension	40×20×10.2mm	

Note: Custom specifications available upon request. Please contact us directly for tailored solutions.

Outline Drawing





17342580638



info@zrhitech.com



zrhitech.com

Room 507, Advanced Technology Achievement Western Transformation Center, No. 36 Xingke South Road,
Jinniu District, Chengdu, Sichuan, China