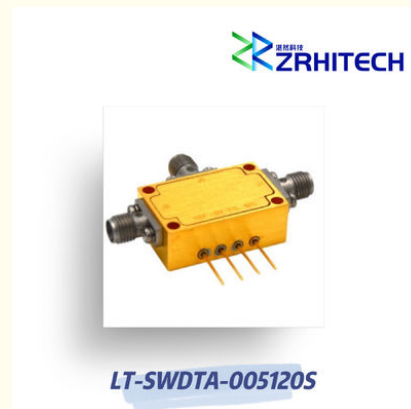


0.5 To 12 GHz SPDT Absorptive PIN Diode Switch

Our Product Introduction

Basic Information

- Place of Origin: CHINA
- Brand Name: ZR Hi-Tech
- Model Number: LT-SWDTA-005120S
- Minimum Order Quantity: 1
- Packaging Details: carton packing
- Delivery Time: 4 weeks
- Payment Terms: T/T



Product Specification

- Product Name: LT-SW Series PIN Diode Switch
- Application: Wireless Communication
- Material: Aluminum
- Temperature: -40~85
- Frequency Range: 0.5 To 12 GHz
- Color: Silver
- Highlight: spdt pin diode switch, pin diode spdt switch, 12GHz pin diode switch

for more products please visit us on zrhitech.com

Product Description

0.5 To 12 GHz SPDT Absorptive PIN Diode Switch

Product Overview

The LT-SW series PIN Diode Switch is designed for wireless communication applications, featuring an aluminum housing and operating temperature range of -40 to +85 .

Key Features

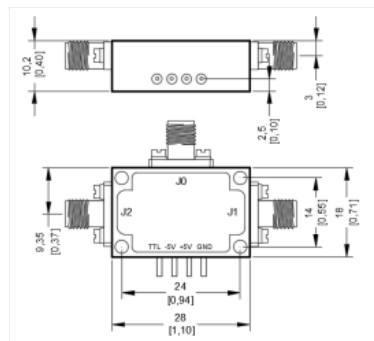
- Frequency range: 0.5 to 12 GHz
- Aluminum housing for durability
- Customizable frequency options
- Fast switching time of 100ns
- Compliance with CE, RoHS, and REACH standards
- 1-year warranty included

Technical Specifications

Parameter	Specification	Conditions
Part Number	LT-SWDTA-005120S	
Type	Absorptive	
Configuration	SPDT	
Frequency Range	0.5 to 12 GHz	
Insertion Loss	2.8 dB	
Isolation	60 dB	
Switching Speed	100 ns	
Control	TTL	
Input/Output VSWR	2.0:1	
Input Power	1 W	
Power Supply (Bias)	+5V / 100mA -5V / 50mA	
Dimensions	28 × 18 × 10.2 mm	

Note: For custom specifications, please contact us directly.

Outline Drawing





17342580638



info@zrhitech.com



zrhitech.com

Room 507, Advanced Technology Achievement Western Transformation Center, No. 36 Xingke South Road,
Jinniu District, Chengdu, Sichuan, China