

1 to 20 GHz 20 Watts LT-DC Series 10dB Directional Coupler

Our Product Introduction

Basic Information

- Place of Origin: CHINA
- Brand Name: ZR Hi-Tech
- Model Number: LT-DC10-010200S
- Minimum Order Quantity: 1
- Packaging Details: carton packing
- Delivery Time: 4 weeks
- Payment Terms: T/T,D/A,D/P



LT-DC10-010200S

Product Specification

for more products please visit us on zrhitech.com

Product Description

1 to 20 GHz 10dB Directional Coupler

Quick Detail:

- 10dB Directional Coupler
- Directivity > 15 dB
- 1 to 20 GHz Frequency Range
- VSWR < 1.4:1
- Coupling 10 ± 0.5 dB
- Max Power 20 Watts(CW)
- CE, RoHS, REACH compliant
- 1 Year Warranty

Description:

The LT-DC10-010200S from ZR is a 10dB Directional Coupler that operates from 1 to 20 GHz and can handle up to 20 Watt (CW) with 15 dB directivity and 1.4:1 VSWR, The package interface uses SMA Female connectors and is REACH and RoHS compliant. More details for LT-DC10-010200S can be seen below.

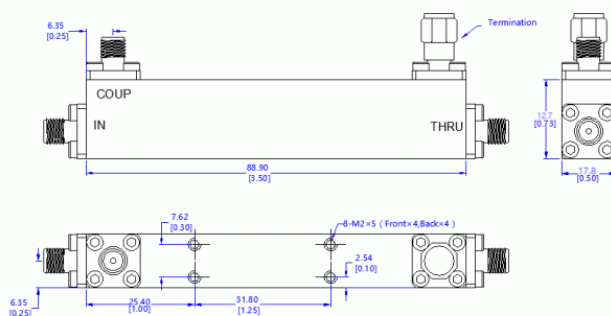
Specifications:

Electrical / Optical Characteristics (Ta=25°C±3°C)

Items	Specification	Conditions
Part Number	LT-DC10-010200S	
Frequency Range	1 to 20 GHz	
Coupling	10 ± 0.5 dB	
Impedance	50 Ohms	
Main Line VSWR	1.4:1 Max.	
Coupling VSWR	1.5:1 Max.	
Insertion Loss	1.4 dB Max.	
Frequency Balance	1.0 dB Max.	
Directivity	15 dB Min.	
Input Power	20 W	
Connectors	SMA Female	
Weight	80 g	
Dimension	88.9x17.8x12.7 mm	

Note: for custom specs, please contact us directly.

Outline Drawing (Unit: mm):



ZRHTECH Sichuan ZR Hi-Tech Ltd.

☎ 13541202623 ✉ info@zrhitech.com 🌐 zrhitech.com

No.1411, Zhuye Building, 100 Xingping Road, Jinniu District, Chengdu, Sichuan Province, CHINA