

1 to 40 GHz 20 Watts LT-DC Series 20dB Directional Coupler

Our Product Introduction

Basic Information

- Place of Origin: CHINA
- Brand Name: ZR Hi-Tech
- Model Number: LT-DC20-010400K
- Minimum Order Quantity: 1
- Packaging Details: carton packing
- Delivery Time: 4 weeks
- Payment Terms: T/T,D/A,D/P



LT-DC20-010400K

Product Specification

for more products please visit us on zrhitech.com

Product Description

1 to 40 GHz 20dB Directional Coupler

Quick Detail:

- 20dB Directional Coupler
- Directivity > 10 dB
- 1 to 40 GHz Frequency Range
- VSWR < 1.7:1
- Coupling 20 ± 0.7 dB
- Max Power 20 Watts(CW)
- CE, RoHS, REACH compliant
- 1 Year Warranty

Description:

The LT-DC20-010400K from ZR is a 20dB Directional Coupler that operates from 1 to 40 GHz and can handle up to 20 Watt (CW) with 10 dB directivity and 1.7:1 VSWR, The package interface uses 2.92mm Female connectors and is REACH and RoHS compliant. More details for LT-DC20-010400K can be seen below.

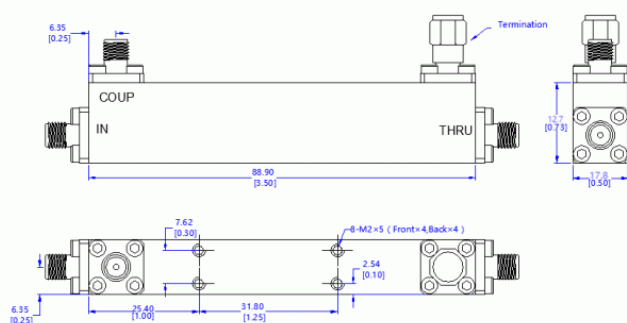
Specifications:

Electrical / Optical Characteristics (Ta=25°C±3°C)

Items	Specification	Conditions
Part Number	LT-DC20-010400K	
Frequency Range	1 to 40 GHz	
Coupling	20 ± 0.7 dB	
Impedance	50 Ohms	
Main Line VSWR	1.7:1 Max.	
Coupling VSWR	1.7:1 Max.	
Insertion Loss	1.9 dB Max.	
Frequency Balance	2.0 dB Max.	
Directivity	10 dB Min.	
Input Power	20 W	
Connectors	2.92mm Female	
Weight	85 g	
Dimension	88.9x17.8x12.7 mm	

Note: for custom specs, please contact us directly.

Outline Drawing (Unit: mm):



ZRHITECH Sichuan ZR Hi-Tech Ltd.



13541202623



info@zrhitech.com



zrhitech.com

No.1411, Zhuye Building, 100 Xingping Road, Jinniu District, Chengdu, Sichuan Province, CHINA