

10dB Directional Coupler 20 Watts 1 to 10 GHz LT-DC Series

Our Product Introduction

Basic Information

- Place of Origin: CHINA
- Brand Name: ZR Hi-Tech
- Model Number: LT-DC10-010100S
- Minimum Order Quantity: 1
- Packaging Details: carton packing
- Delivery Time: 4 weeks
- Payment Terms: T/T,D/A,D/P



Product Specification

- Highlight: 1 to 10 GHz Directional Coupler,
10dB Directional Coupler,
20 Watts Directional Coupler

Product Description

10dB Directional Coupler 20 Watts 1 to 10 GHz LT-DC Series

Product Overview

The LT-DC10-010100S is a high-performance 10dB directional coupler operating from 1 to 10 GHz frequency range with excellent directivity and low VSWR characteristics.

Key Features

10dB Directional Coupler with >16 dB directivity

Broad frequency range: 1 to 10 GHz

Low VSWR: <1.3:1

Precision coupling: 10 ± 1.0 dB

High power handling: 20 Watts (CW)

SMA Female connectors

Compliance: CE, RoHS, REACH

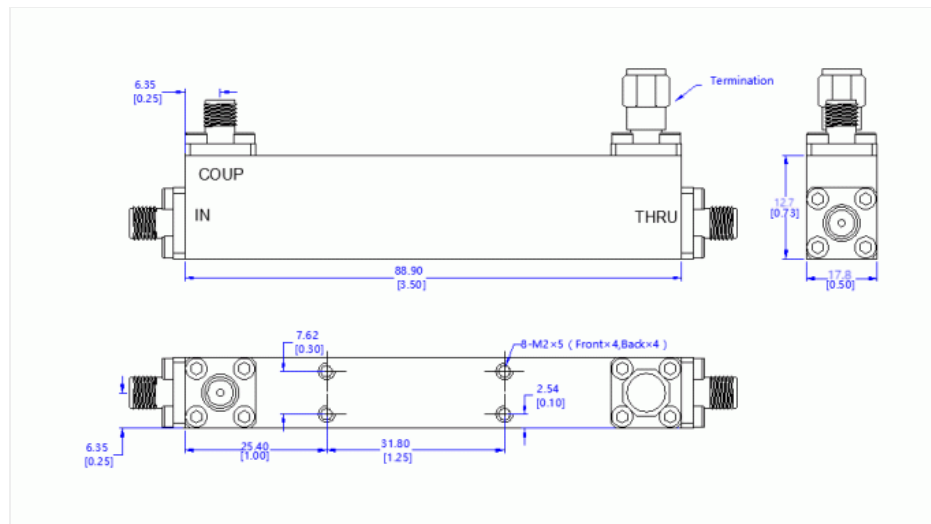
1 Year Warranty

Technical Specifications

Parameter	Specification	Conditions
Part Number	LT-DC10-010100S	
Frequency Range	1 to 10 GHz	
Coupling	10 ± 1.0 dB	
Impedance	50 Ohms	
Main Line VSWR	1.3:1 Max.	
Coupling VSWR	1.3:1 Max.	
Insertion Loss	1.2 dB Max.	
Frequency Balance	1.0 dB Max.	
Directivity	16 dB Min.	
Input Power	20 W	
Connectors	SMA Female	
Weight	75 g	
Dimensions	88.9×17.8×12.7 mm	

Note: Custom specifications available upon request.

Outline Drawing



ZRHITECH Sichuan ZR Hi-Tech Ltd.

☎ 17342580638 ✉ info@zrhitech.com 🌐 zrhitech.com

Room 507, Advanced Technology Achievement Western Transformation Center, No. 36 Xingke South Road,
Jinniu District, Chengdu, Sichuan, China