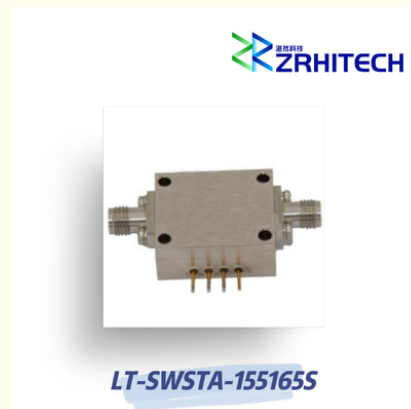


15.5 To 16.5 GHz SPST Absorptive PIN Diode Switch

Our Product Introduction

Basic Information

- Place of Origin: CHINA
- Brand Name: ZR Hi-Tech
- Model Number: LT-SWSTA-155165S
- Minimum Order Quantity: 1
- Packaging Details: carton packing
- Delivery Time: 4 weeks
- Payment Terms: T/T



Product Specification

- Product Name: LT-SW Series PIN Diode Switch
- Application: Wireless Communication
- Material: Aluminum
- Temperature: -40~85°C
- Frequency Range: 15.5 To 16.5 GHz
- Color: Silver
- Highlight: pin diode rf switch design, pin diode rf switch, pin diode rf switch high power

for more products please visit us on zrhitech.com

Product Description

15.5 to 16.5 GHz LT-SW Series PIN Diode Switch

Quick Detail:

- Aluminum Housing
- Customizable Frequency
- -40°C~+85°C Operating Temperature
- Fast Switching Time 100ns
- CE, RoHS, REACH compliant
- 1 Year Warranty

Description:

The LT-SWSTA-155165S from ZR is a Absorptive PIN Diode Switch with Frequency 15.5 to 16.5 GHz, Isolation 85 dB, Switching Speed 100ns. Power Supply with bias +5V/80mA and -12V/80mA. More details for LT-SWSTA-155165S can be seen below.

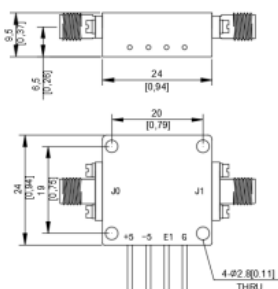
Specifications:

Electrical / Optical Characteristics (Ta=25°C±3°C)

Items	Specification	Conditions
Part Number	LT-SWSTA-155165S	
Type	Absorptive	
Configuration	SPST	
Frequency Range	15.5 to 16.5 GHz	
Insertion Loss	4 dB	
Isolation	85 dB	
Switching Speed	100 ns	
Control	TTL	
Input / Output VSWR	1.8:1	
Input Power	0.2 W	
Power Supply(Bias)	+5V / 80mA -12V / 80mA	
Dimension	24*24*9.5mm	

Note: for custom specs, please contact us directly.

Outline Drawing (Unit: mm):



Sichuan ZR Hi-Tech Ltd.



13541202623



info@zrhitech.com



zrhitech.com

No.1411, Zhuye Building, 100 Xingping Road, Jinniu District, Chengdu, Sichuan Province, CHINA