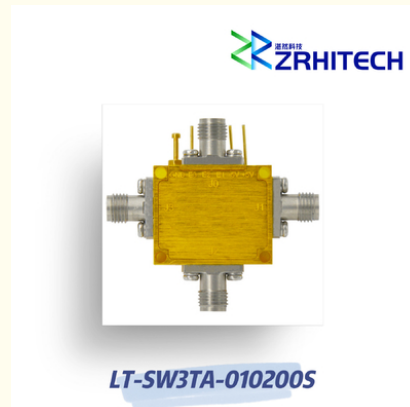


1 To 20 GHz SP3T Absorptive PIN Diode Switch

Our Product Introduction

Basic Information

- Place of Origin: CHINA
- Brand Name: ZR Hi-Tech
- Model Number: LT-SW3TA-010200S
- Minimum Order Quantity: 1
- Packaging Details: carton packing
- Delivery Time: 4 weeks
- Payment Terms: T/T



Product Specification

- Product Name: LT-SW Series PIN Diode Switch
- Application: Wireless Communication
- Material: Aluminum
- Temperature: -40~85°C
- Frequency Range: 1 To 20 GHz
- Color: Silver
- Highlight: **SP3T PIN Diode Switch,
PIN Diode SP3T Switches,
High Reliability PIN Diode Switch**

for more products please visit us on zrhitech.com

Product Description

1 to 20 GHz LT-SW Series PIN Diode Switch

Quick Detail:

- Aluminum Housing
- Customizable Frequency
- -40°C~+85°C Operating Temperature
- Fast Switching Time 100ns
- CE, RoHS, REACH compliant
- 1 Year Warranty

Description:

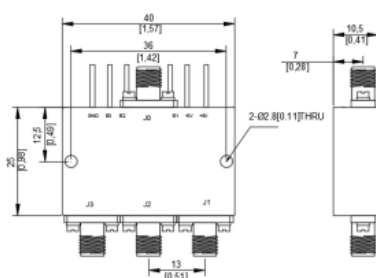
The LT-SW3TA-010200S from ZR is a Absorptive PIN Diode Switch with Frequency 1 to 20 GHz, Isolation 60 dB, Switching Speed 100ns. Power Supply with bias +5V/150mA and -5V/50mA. More details for LT-SW3TA-010200S can be seen below.

Specifications:

Electrical / Optical Characteristics (Ta=25°C±3°C)

Items	Specification	Conditions
Part Number	LT-SW3TA-010200S	
Type	Absorptive	
Configuration	SP3T	
Frequency Range	1 to 20 GHz	
Insertion Loss	3.4 dB	
Isolation	80 dB	
Switching Speed	100 ns	
Control	PIN	
Input / Output VSWR	2.0:1	
Input Power	1.0 W	
Power Supply(Bias)	+5V / 150mA	
	-5V / 50mA	
Dimension	40x25x10.5mm	
Note: for custom specs, please contact us directly.		

Outline Drawing (Unit: mm):



 **ZRHITECH** Sichuan ZR Hi-Tech Ltd.



13541202623



info@zrhitech.com



zrhitech.com

No.1411, Zhuye Building, 100 Xingping Road, Jinniu District, Chengdu, Sichuan Province, CHINA