

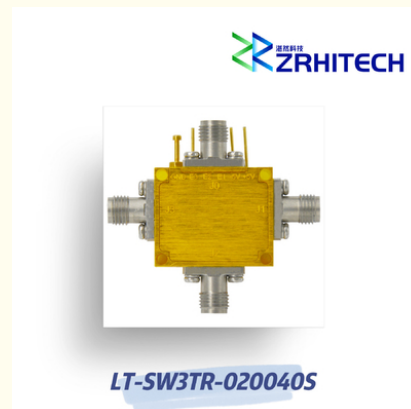
2 To 4 GHz SP3T Reflective PIN Diode Switch

Our Product Introduction

for more products please visit us on zrhitech.com

Basic Information

- Place of Origin: CHINA
- Brand Name: ZR Hi-Tech
- Model Number: LT-SW3TR-020040S
- Minimum Order Quantity: 1
- Packaging Details: carton packing
- Delivery Time: 4 weeks
- Payment Terms: T/T



Product Specification

- Product Name: LT-SW Series PIN Diode Switch
- Application: Wireless Communication
- Material: Aluminum
- Temperature: -40~85°C
- Frequency Range: 2 To 4 GHz
- Color: Silver
- Highlight: **High Power SP3T PIN Diode Switch, SP3T PIN Diode Switch 4GHz, 4GHz PIN Diode Switch**

Product Description

2 to 4 GHz LT-SW Series PIN Diode Switch

Quick Detail:

- Aluminum Housing
- Customizable Frequency
- -40°C~+85°C Operating Temperature
- Fast Switching Time 100ns
- CE, RoHS, REACH compliant
- 1 Year Warranty

Description:

The LT-SW3TR-020040S from ZR is a Reflective PIN Diode Switch with Frequency 2 to 4 GHz, Isolation 80 dB, Switching Speed 100ns. Power Supply with bias +5V/120mA and -5V/50mA. More details for LT-SW3TR-020040S can be seen below.

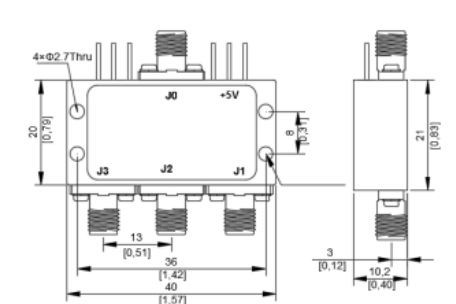
Specifications:

Electrical / Optical Characteristics (Ta=25°C±3°C)

Items	Specification	Conditions
Part Number	LT-SW3TR-020040S	
Type	Reflective	
Configuration	SP3T	
Frequency Range	2 to 4 GHz	
Insertion Loss	1.4 dB	
Isolation	80 dB	
Switching Speed	100 ns	
Control	PIN	
Input / Output VSWR	1.5:1	
Input Power	1.0 W	
Power Supply(Bias)	+5V / 120mA	
	-5V / 50mA	
Dimension	40*25*10.5mm	

Note: for custom specs, please contact us directly.

Outline Drawing (Unit: mm):



ZRHTECH Sichuan ZR Hi-Tech Ltd.

☎ 13541202623

✉ info@zrhitech.com

🌐 zrhitech.com

No.1411, Zhuye Building, 100 Xingping Road, Jinniu District, Chengdu, Sichuan Province, CHINA