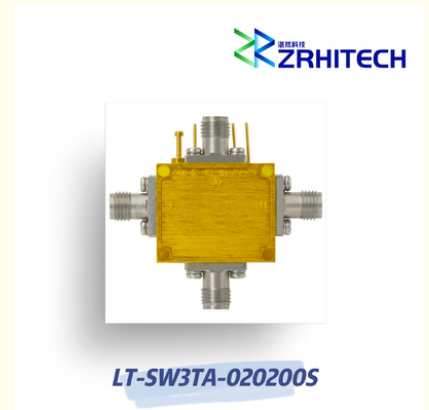


## 2 To 20 GHz SP3T Absorptive PIN Diode Switch

Our Product Introduction

### Basic Information

- Place of Origin: CHINA
- Brand Name: ZR Hi-Tech
- Model Number: LT-SW3TA-020200S
- Minimum Order Quantity: 1
- Packaging Details: carton packing
- Delivery Time: 4 weeks
- Payment Terms: T/T



### Product Specification

- Product Name: LT-SW Series PIN Diode Switch
- Application: Wireless Communication
- Material: Aluminum
- Temperature: -40~85°C
- Frequency Range: 2 To 20 GHz
- Color: Silver
- Highlight: **SP3T PIN Diode Switch,  
SP3T PIN Diode Switch 20GHz,  
SMA SP3T PIN Diode Switch**

for more products please visit us on [zrhitech.com](http://zrhitech.com)

## Product Description

### 2 to 20 GHz LT-SW Series PIN Diode Switch

#### Quick Detail:

- Aluminum Housing
- Customizable Frequency
- -40°C~+85°C Operating Temperature
- Fast Switching Time 100ns
- CE, RoHS, REACH compliant
- 1 Year Warranty

#### Description:

The LT-SW3TA-020200S from ZR is a Absorptive PIN Diode Switch with Frequency 2 to 20 GHz, Isolation 80 dB, Switching Speed 100ns. Power Supply with bias +5V/150mA and -5V/50mA. More details for LT-SW3TA-020200S can be seen below.

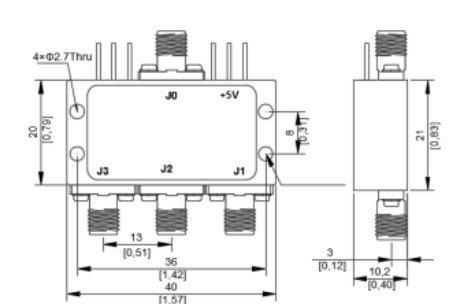
#### Specifications:

#### Electrical / Optical Characteristics (Ta=25°C±3°C)

Items	Specification	Conditions
Part Number	LT-SW3TA-020200S	
Type	Absorptive	
Configuration	SP3T	
Frequency Range	2 to 20 GHz	
Insertion Loss	3.8 dB	
Isolation	60 dB	
Switching Speed	100 ns	
Control	TTL	
Input / Output VSWR	2.0:1	
Input Power	1 W	
Power Supply(Bias)	+5V / 150mA	
	-5V / 50mA	
Dimension	40*20*10.2mm	

**Note: for custom specs, please contact us directly.**

#### Outline Drawing (Unit: mm):



**ZRHITECH** Sichuan ZR Hi-Tech Ltd.



13541202623



info@zrhitech.com



zrhitech.com

No.1411, Zhuye Building, 100 Xingping Road, Jinniu District, Chengdu, Sichuan Province, CHINA