

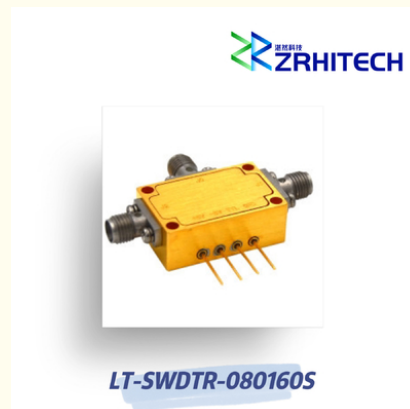
8 To 16 GHz SPDT Reflective PIN Diode Switch

Our Product Introduction

for more products please visit us on zrhitech.com

Basic Information

- Place of Origin: CHINA
- Brand Name: ZR Hi-Tech
- Model Number: LT-SWDTR-080160S
- Minimum Order Quantity: 1
- Packaging Details: carton packing
- Delivery Time: 4 weeks
- Payment Terms: T/T



Product Specification

- Product Name: LT-SW Series PIN Diode Switch
- Application: Wireless Communication
- Material: Aluminum
- Temperature: -40~85°C
- Frequency Range: 8 To 16 GHz
- Color: Silver
- Highlight: 8 GHz PIN Diode Switch,
16 GHz PIN Diode Switch,
Reflective PIN Diode Switch

Product Description

8 to 16 GHz LT-SW Series PIN Diode Switch

Quick Detail:

- Aluminum Housing
- Customizable Frequency
- -40°C~+85°C Operating Temperature
- Fast Switching Time 80ns
- CE, RoHS, REACH compliant
- 1 Year Warranty

Description:

The LT-SWDTR-080160S from ZR is a Reflective PIN Diode Switch with Frequency 8 to 16 GHz, Isolation 60 dB, Switching Speed 80ns. Power Supply with bias +5V/90mA and -5V/50mA. More details for LT-SWDTR-080160S can be seen below.

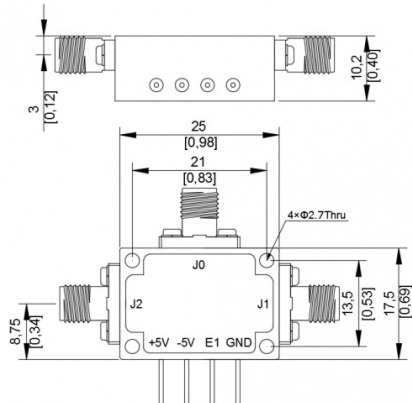
Specifications:


Electrical / Optical Characteristics (Ta=25°C±3°C)

Items	Specification	Conditions
Part Number	LT-SWDTR-080160S	
Type	Reflective	
Configuration	SPDT	
Frequency Range	8 to 16 GHz	
Insertion Loss	2.8 dB	
Isolation	60 dB	
Switching Speed	80 ns	
Control	TTL	
Input / Output VSWR	2.0:1	
Input Power	1 W	
Power Supply(Bias)	+5V / 90mA -5V / 50mA	
Dimension	25*17.5*10.2mm	

Note: for custom specs, please contact us directly.

Outline Drawing (Unit: mm):



 **ZRHITECH** Sichuan ZR Hi-Tech Ltd.

☎ 13541202623

✉ info@zrhitech.com

🌐 zrhitech.com

No.1411, Zhuye Building, 100 Xingping Road, Jinniu District, Chengdu, Sichuan Province, CHINA